



SENTINEL Hub

# Building the Company Without Having an Exit in Mind

Grega Milcinski

Sinergise/Sentinel Hub

[grega.milcinski@sinergise.com](mailto:grega.milcinski@sinergise.com)

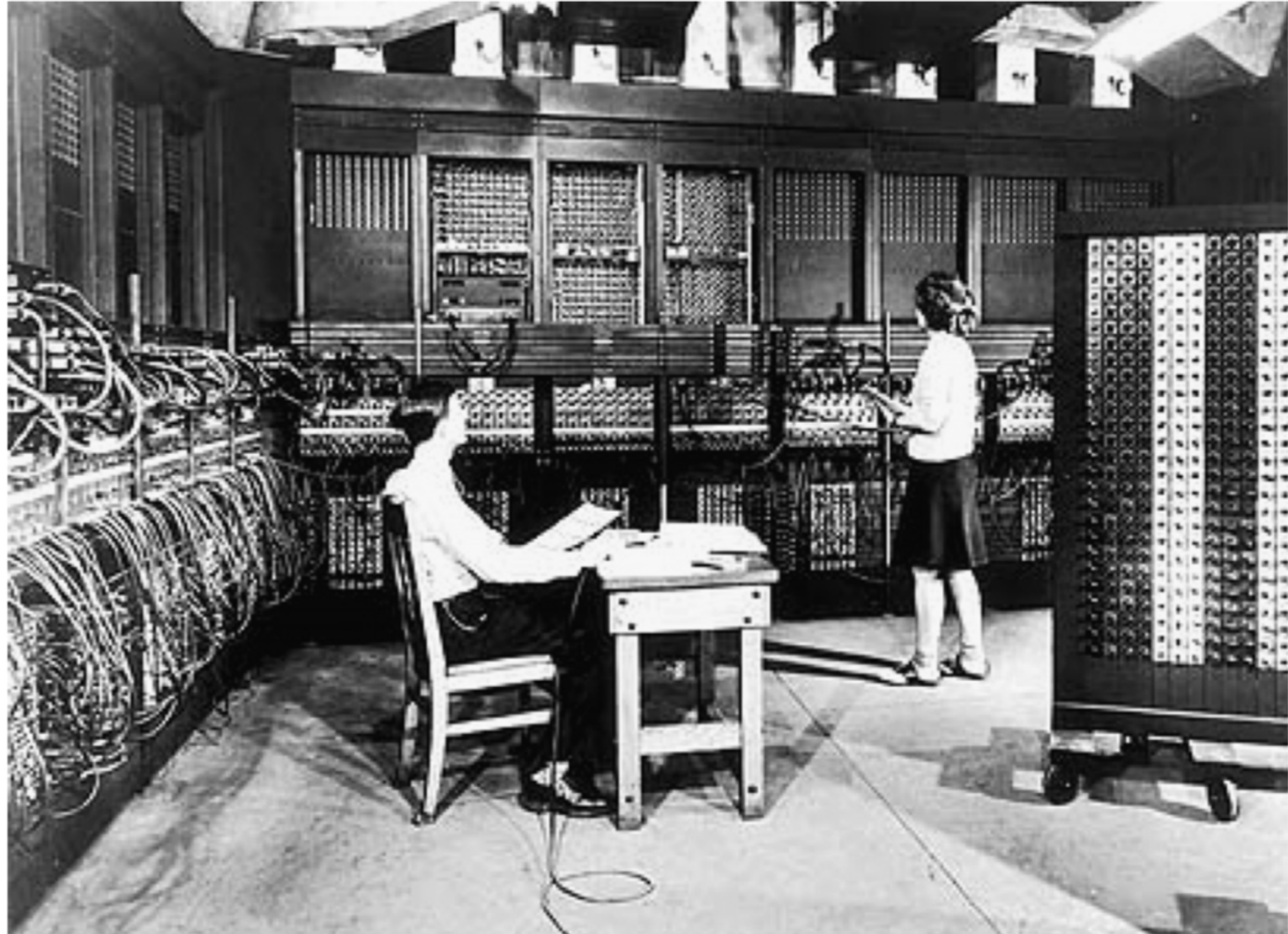




Google







# Sentinel-2

[earth observation](#)[satellite imagery](#)[gis](#)[natural resource](#)[sustainability](#)[disaster response](#)

## Description

The [Sentinel-2 mission](#) is a land monitoring constellation of two satellites that provide high resolution optical imagery and provide continuity for the current SPOT and Landsat missions. The mission provides a global coverage of the Earth's land surface every 5 days, making the data of great use in on-going studies. L1C data are available from June 2015 globally. L2A data are available from April 2017 over wider Europe region, planned to be expanded globally in July 2018.

## Update Frequency

New Sentinel data are added regularly, usually within few hours after they are available on Copernicus OpenHub.

## License

Access to Sentinel data is free, full and open for the broad Regional, National, European and International user community. View [Terms and Conditions](#).

## Documentation

<http://sentinel-pds.s3-website.eu-central-1.amazonaws.com/>

## Managed By

[Sinergise](#)

## Contact

<https://forum.sentinel-hub.com/c/aws-sentinel>

## Usage Examples

- [EO Browser by Sinergise](#)

## Resources on AWS

### Description

Level 1C scenes and metadata, in [Requester Pays](#) S3 bucket

### Resource type

S3 Bucket

### Amazon Resource Name (ARN)

`arn:aws:s3:::sentinel-s2-l1c`

### AWS Region

`eu-central-1`

---

### Description

[S3 Inventory](#) files for L1C

### Resource type

S3 Bucket

### Amazon Resource Name (ARN)

`arn:aws:s3:::sentinel-inventory/sentinel-s2-l1c`

### AWS Region

`eu-central-1`

---

### Description

Level 2A scenes and metadata, in [Requester Pays](#) S3 bucket



2016-05-23



20 %



Guinea-Bissau



Rendering



Effects



Custom

Create custom rendering



Natural Color

Based on bands 4,3,2



Color Infrared (vegetation)

Based on bands 8,4,3



False color (urban)

Based on bands 12,11,4



Agriculture

Based on bands 11, 8A and 2



Atmospheric penetration

Based on bands 12,11,8A



Bathymetric

Based on bands 4,3,1



Geology

Based on bands 12,4,2



Moisture Index

Based on combination of bands  $(B8A - B11)/(B8A + B11)$ 

REFRESH

GENERATE

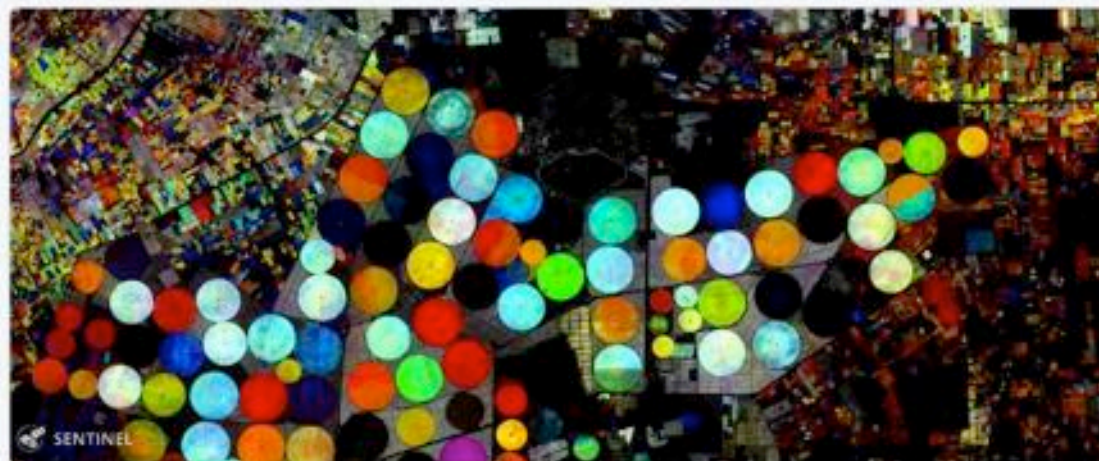
3 km





HD @HarelDan · 24 Oct 2017

Tip: Blue fields growing, Green fields maturing, Yellow Fields ripe, Red fields reaped/drying. Same place, 3 days ago [apps.sentinel-hub.com/sentinel-playg...](https://apps.sentinel-hub.com/sentinel-playg...)



4 5 20



**Stef Lhermitte**

@StefLhermitte

Following

Replying to @HarelDan @sentinel\_hub and 4 others

Wow! The moment even my mom can classify petabytes in seconds on her very old computer is getting closer. Just need to teach her Javascript

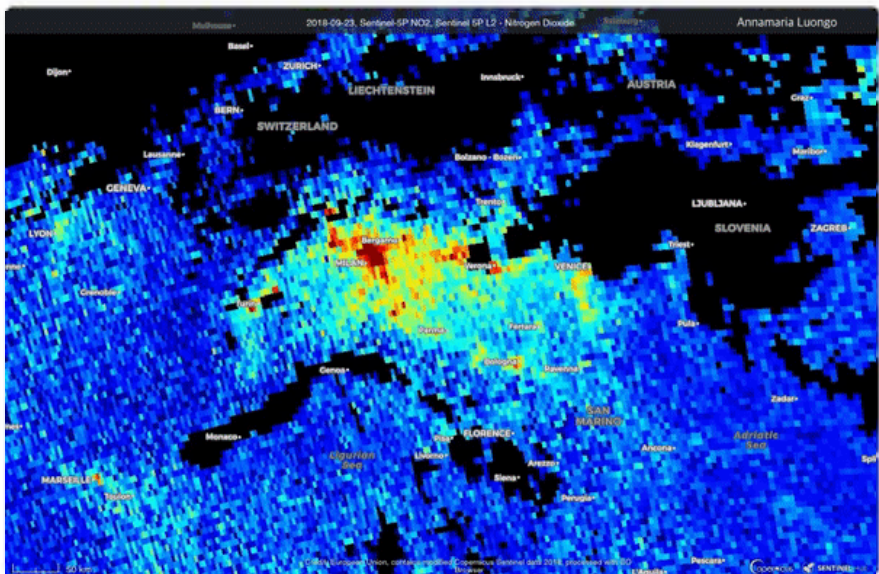
8:14 AM - 25 Oct 2017

1 Retweet 9 Likes





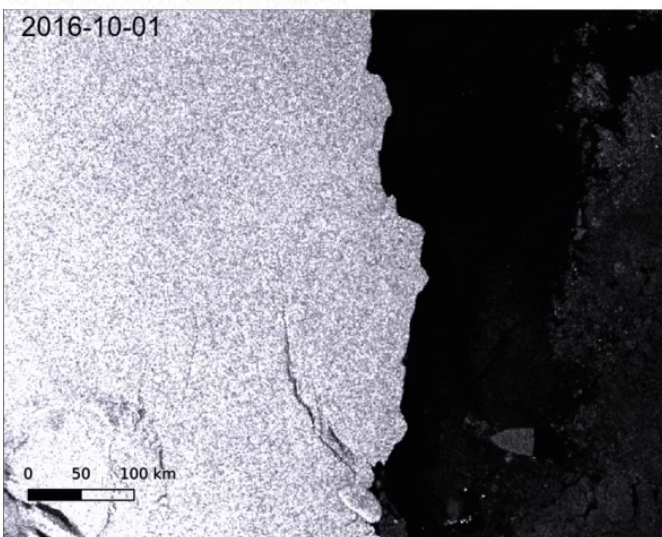
annamaria @annamaria\_84 · Sep 27  
 The breath (polluted by #NO2) of the #Padana Plain, north of #Italy, from Sunday 23 September to Thursday 27 September 2018 (today). #Sentinel5p  
 @CopernicusEU @sentinel\_hub @minambientalIT @ISPRa\_Press



Simon Gascoin @sgascoin · Sep 18  
 #LarsenC The Movie 🎬 updated

Time lapse of 56 #Sentinel1 extra wide swath images since 2016-10-01.

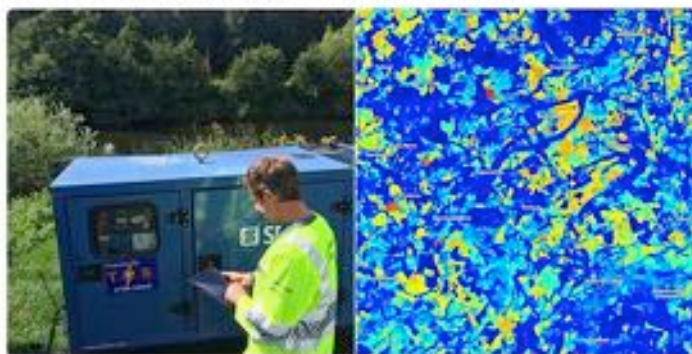
Iceberg #A68 is leaving my bounding box!



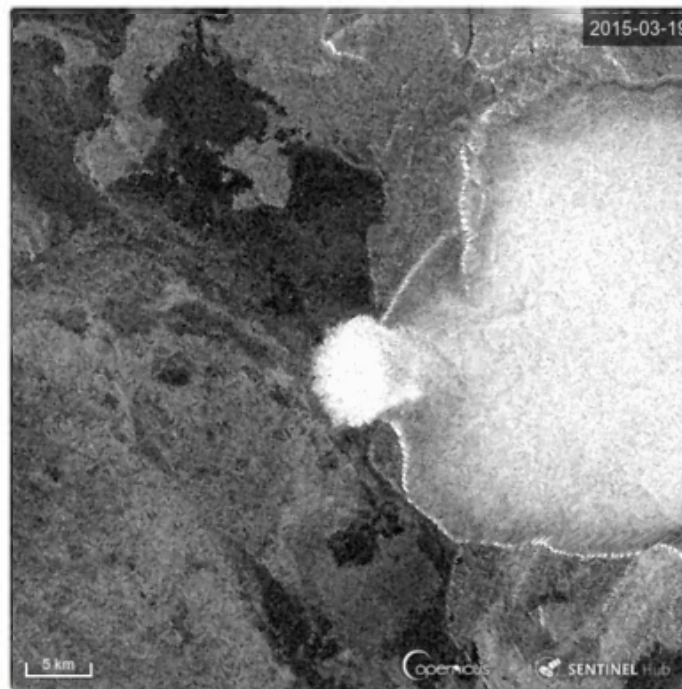
Dave Throup @DaveThroupEA · Aug 19  
 It might be Sunday morning but Environment Officers are on #waterpatrol along the #herefordshire Wye. Levels & flows still very low.

Visits targeted using latest @CopernicusEU @sentinel\_hub imagery.

Checking pumps are legal & operating to licence conditions.



Simon Gascoin @sgascoin · Sep 24  
 New animation of Vavilov ice cap collapse, this time using #Sentinel1 @CopernicusEU radar (no issue with clouds or polar night)  
 "You can literally watch an ice cap gut itself in front of your eyes"  
 quote by @IceSheetMike, 2018  
 @vrushmd

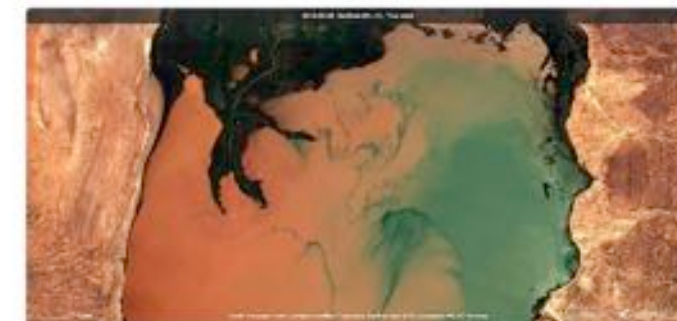


Benjamin Strick @BenDoBrown · Sep 26  
 The birth of a drone base in Sahara's sandy plains at Dirkou, Niger.  
 Location: [goo.gl/maps/bAahXDbf...](https://goo.gl/maps/bAahXDbf...)  
 More info: [nytimes.com/2018/09/09/wor...](https://nytimes.com/2018/09/09/wor...) @sentinel\_hub @CopernicusEU  
 #drones #Niger




Zack Labe @ZLabe · Sep 14  
 Earth's art - runoff into Lake Turkana (Ethiopia/Kenya) located in Africa's Great Rift Valley. It is the 4th largest salt lake in the world and known for its greenish color ("Jade Sea").

[9 September 2018, Sentinel-2 satellite image]



You, ESA EarthObservation and Copernicus EU





[https://services.sentinel-hub.com/ogc/wcs/<INSTANCE>?SERVICE=WCS&REQUEST=GetCoverage  
&COVERAGE=1\\_VV\\_ORTHORECTIFIED  
&TIME=2018-07-17/2018-07-17  
&BBOX=15.28815,107.07000,14.75496,106.09153  
&RESX=20m&RESY=20m  
&FORMAT=image/tiff&SRS=EPSG:4326](https://services.sentinel-hub.com/ogc/wcs/<INSTANCE>?SERVICE=WCS&REQUEST=GetCoverage&COVERAGE=1_VV_ORTHORECTIFIED&TIME=2018-07-17/2018-07-17&BBOX=15.28815,107.07000,14.75496,106.09153&RESX=20m&RESY=20m&FORMAT=image/tiff&SRS=EPSG:4326)

No worries about download, storage, decoding,  
stitching scenes, reprojection, scaling, mosaicking,  
meta-data parsing, backscatter calibration, orthorectification ...



**Sentinel Hub plans** let you access all open datasets and full imagery archive.

Select duration:

	GET STARTED	INDIVIDUAL NON-COMMERCIAL USE	INDIVIDUAL COMMERCIAL USE	APP DEVELOPERS & ENTERPRISE
Price	<b>0 €</b>	<b>16.6 € / month</b> <small>(billed as 199 € / year, VAT included)</small>	<b>83.3 € / month</b> <small>(billed as 999 € / year, without VAT)</small>	from <b>500 € / month</b> <small>(Contact us)</small>
Download analytical data with <a href="#">EO Browser</a>	✓	✓	✓	✓
<a href="#">OGC standard WMS / WCS / WMTS / WFS</a>		✓	✓	✓
<a href="#">API for advanced features</a>		✓	✓	✓
<a href="#">Configuration utility tool</a>		✓	✓	✓
Requests per minute		20	20	100 .. ∞
Non-commercial use	✓	✓	✓	✓
Commercial use			✓	✓



182028

Lat: 35° 57' 52.067N Lon: 36° 9' 10.997E Grid Off  
Elevation: 254 m, 833 ft Best



Zoom Level: 15  
300 m  
1000 ft

No.	Id	Location	Crop	Field average
09-01	Holsterberg 1	farm	Lombardo	253
10-01	Holsterberg 2+3	farm	Lombardo	255
13-01	Katzbach	farm	DK Exception	252
11-01	Klöseberg	farm	Lombardo	248
02-01	Milde	farm	/	249
12-01	Nordhang	farm	Mentor	250
08-01	Wietfeld	farm	RGT Reform	249
01-03	X-Blöh v.Hof	farm	Blöhmischung	N/A
01-02	v.Hof	farm	DK Exception	250
03-03	vorn Eichkopf	farm	KWS Keops	250
207.0	x-Grü Nordhang	farm	/	259

Show all

### Variable rate application automatic mode

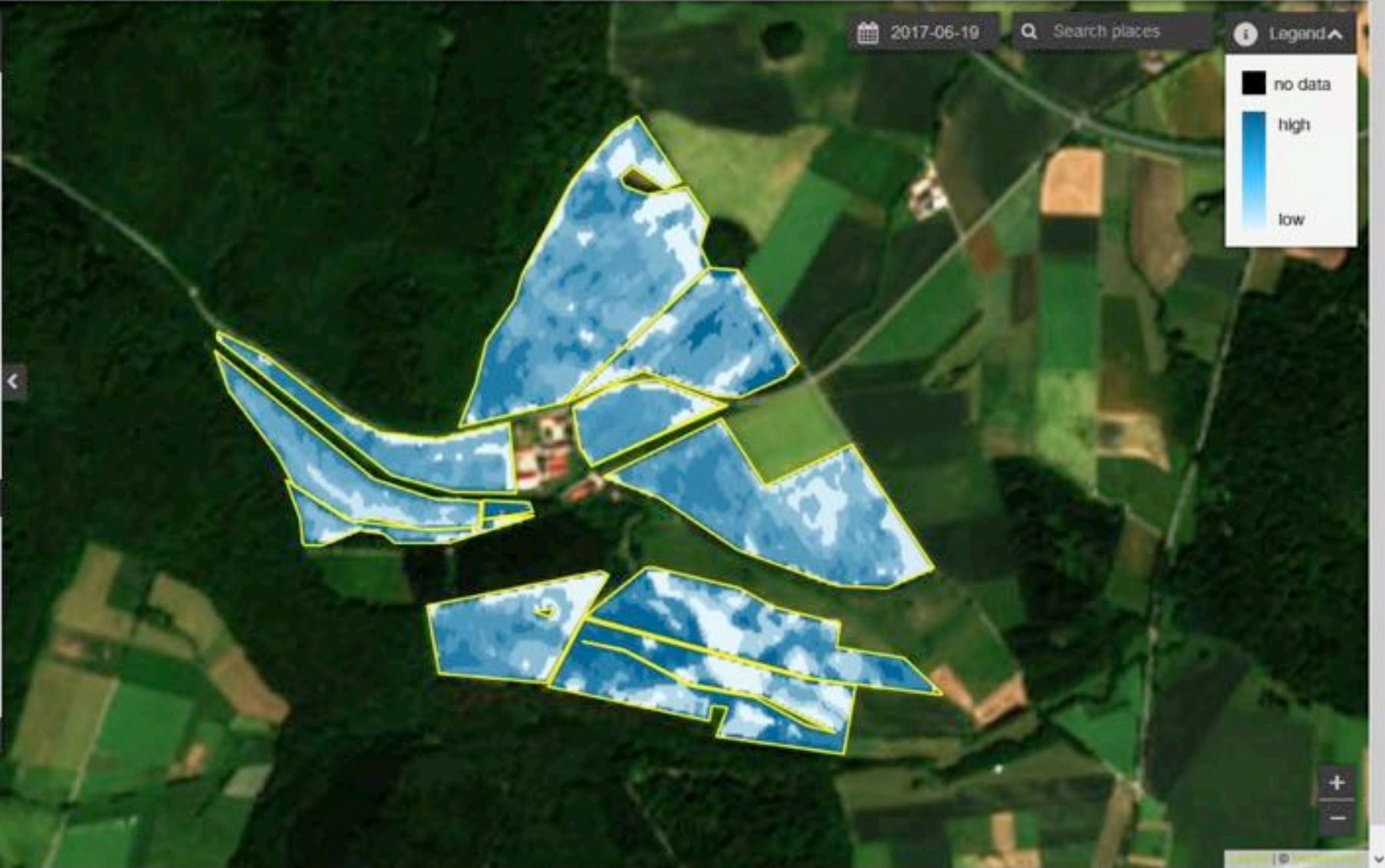
Unit: kg/ha Strategy: quality

Avg. (kg/ha):

+/- (kg/ha):

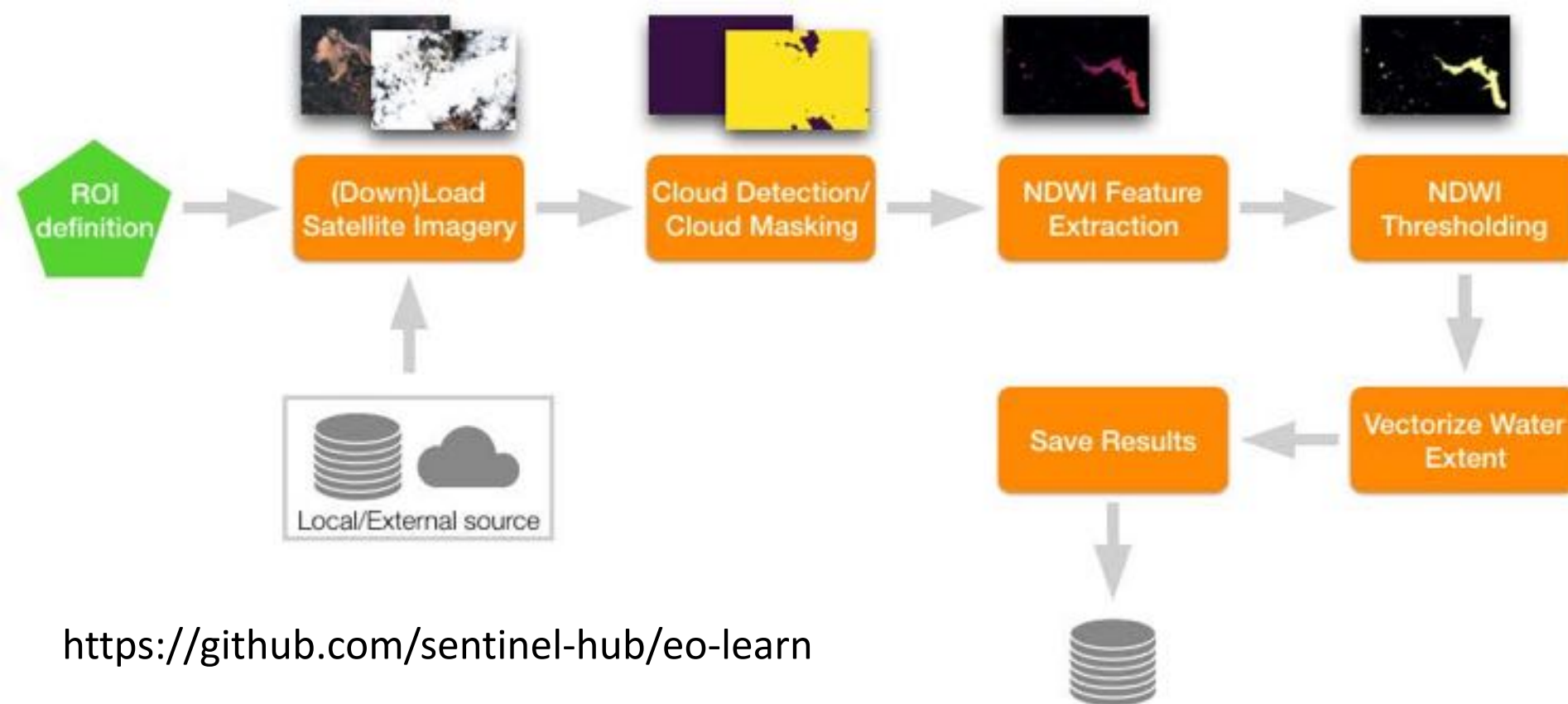
Total (kg/ha):

Save config Recalculate Download Hide

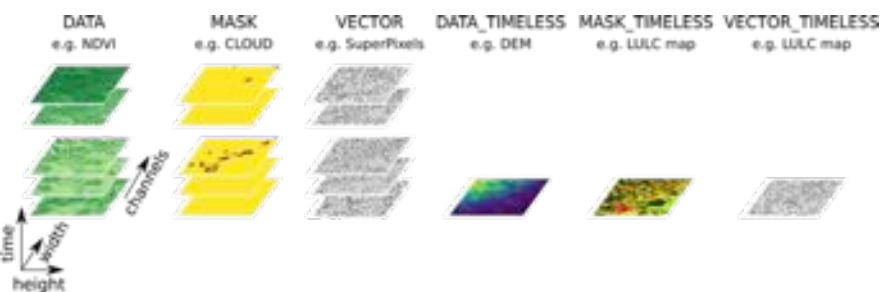




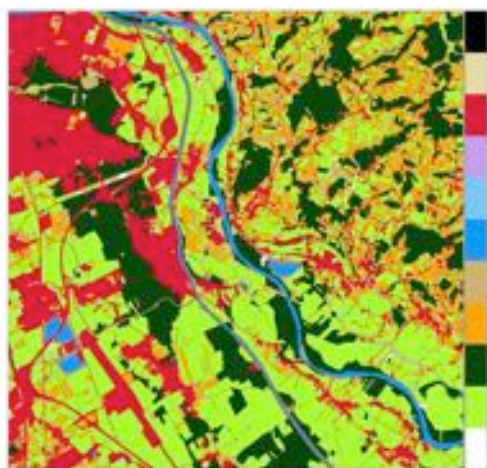
Funded by the H2020  
Framework Programme  
of the European Union



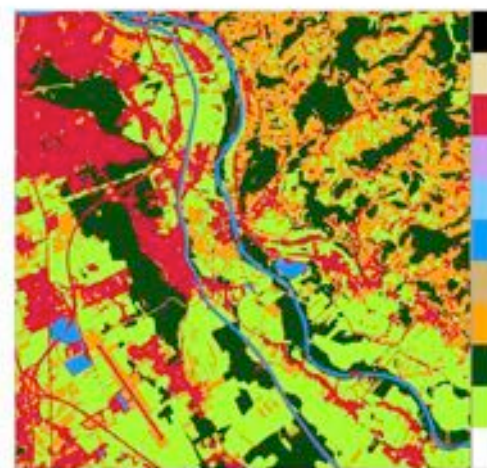
<https://github.com/sentinel-hub/eo-learn>



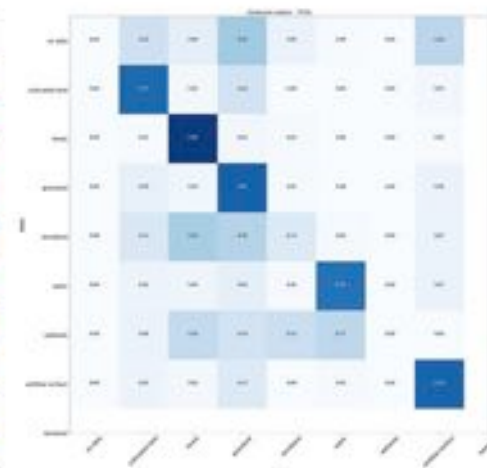
Ground truth



Predicted



Confusion Matrix





**Simon Gascoin**

@sgascoin

Following



Because of you [@sentinel\\_hub](#) my timeline is flooded by [#Sentinel2](#) gifs! You just ruined my old-fashioned bash scripts! 🙄🙄😄😄



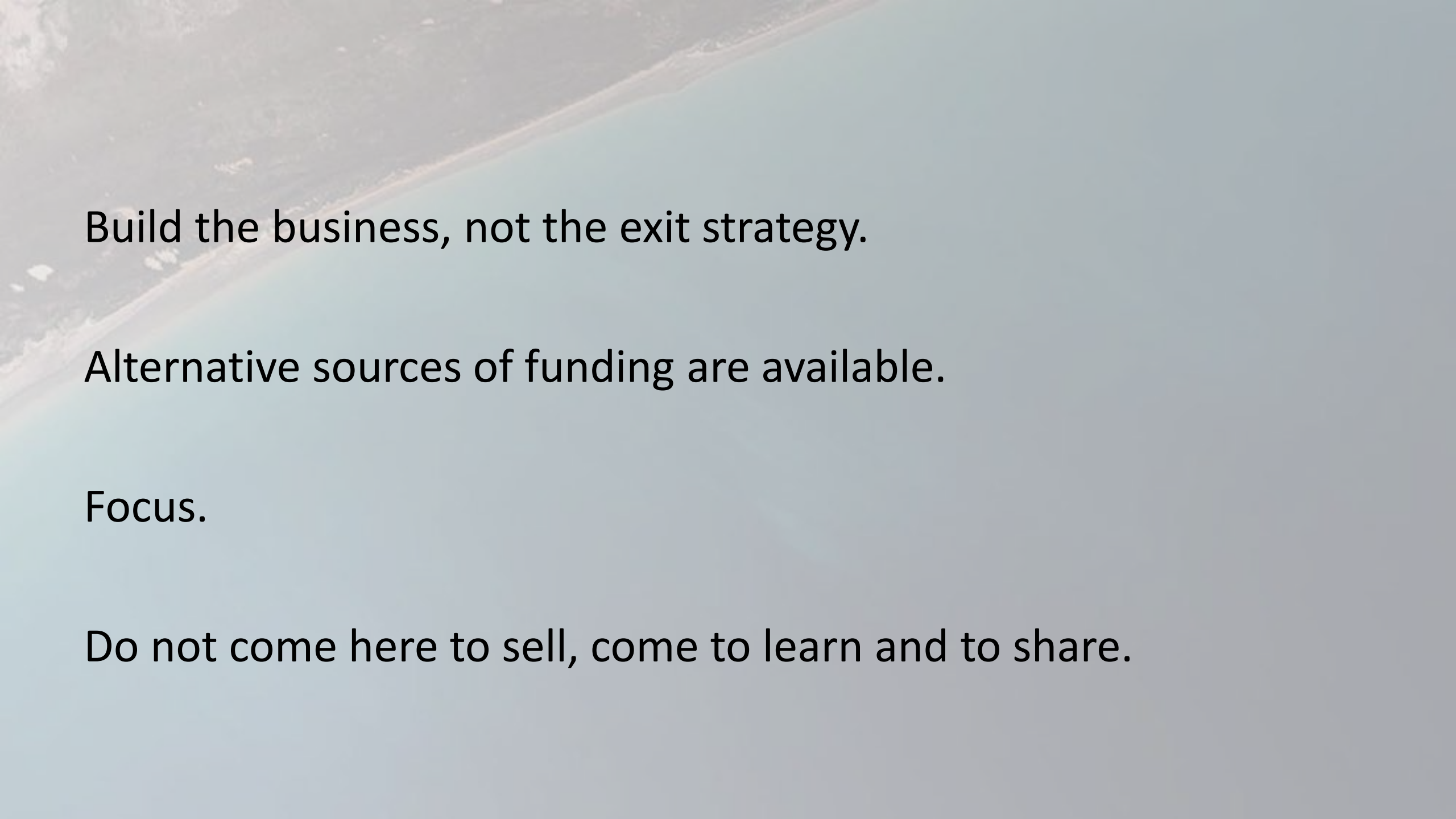
**Ørjan H.H. Vøllestad** @hoyd

Tromsø, Norway from last April up until today using [#Sentinel2](#) satellite imagery. [@CopernicusEU](#) [@sentinel\\_hub](#) [@VisitTromso](#)

10:23 PM - 8 Apr 2018

5 Retweets 19 Likes





Build the business, not the exit strategy.

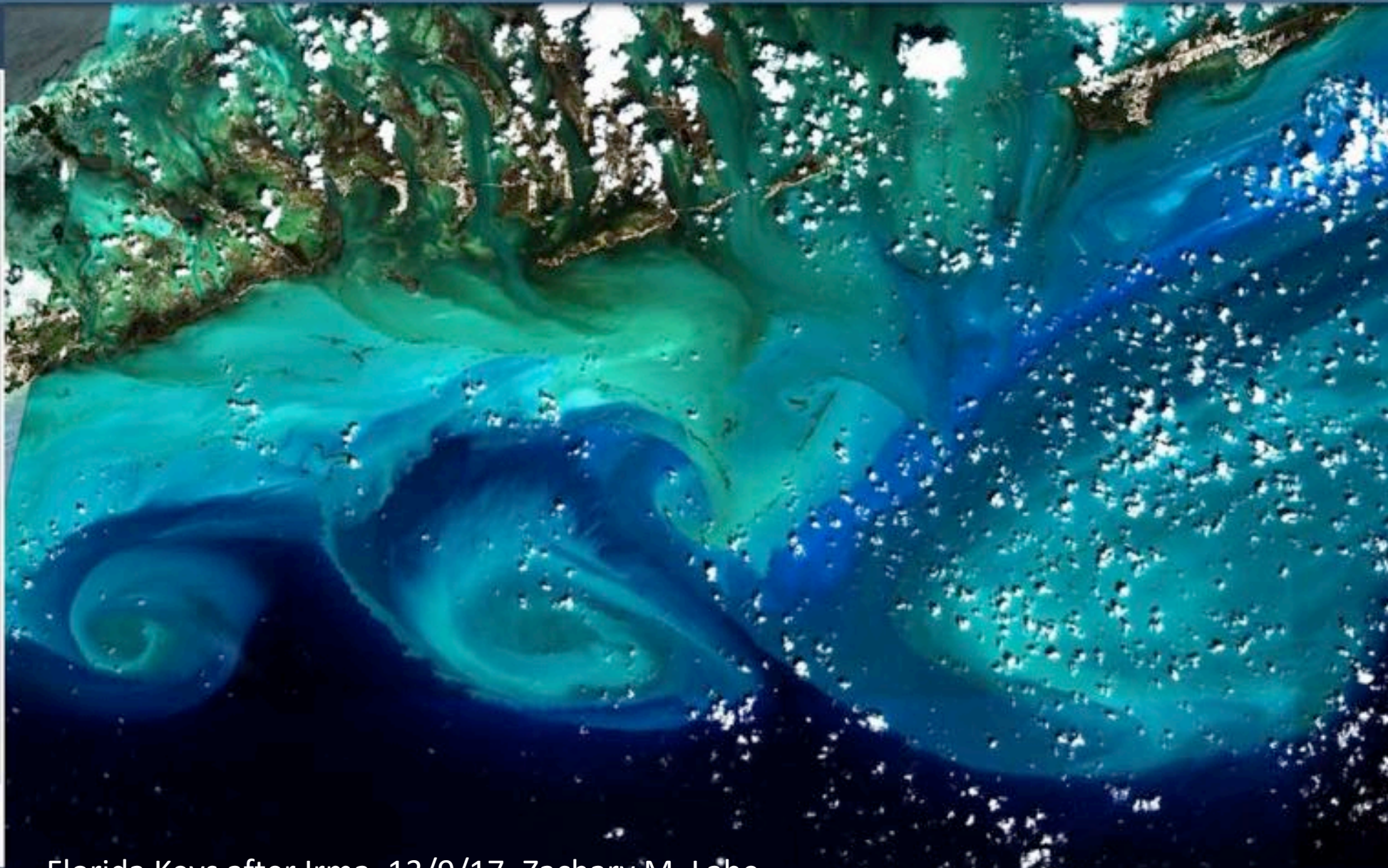
Alternative sources of funding are available.

Focus.

Do not come here to sell, come to learn and to share.

- Rendering Effects
- Custom  
Create custom rendering.
  - Natural color  
Based on bands 4,3,2
  - Color Infrared (vegetation)  
Based on bands 8,4,3
  - False color (urban)  
Based on bands 12,11,4
  - Agriculture  
Based on bands 11, 8A and 2
  - Vegetation Index  
Based on combination of bands  $(B6 - B4) / (B6 + B4)$
  - Moisture Index  
Based on combination of bands  $(B6A - B11) / (B6A + B11)$
  - Geology  
Based on bands 12,4,2
  - Bathymetric  
Based on bands 4,3,1
  - Atmospheric penetration  
Based on bands 12,11,8A
  - SWIR  
Based on bands 12,8A,4

GENERATE



Florida Keys after Irma, 13/9/17, Zachary M. Labe, @ZLabe, Copernicus